

SLATZ® CAPTURE™



**CHANGE INSERTS,
NOT SIGNS.**



*The new, graphic-insert
addition to the award-winning
Slatz sign system.*

SLATZ CAPTURE™

Slatz *Capture* was designed to meet the challenge of change.

Capture is the latest development in our trend-setting, modular sign system. In response to customer demand for a *flat* insert option, we have combined the structural integrity of Slatz® extruded aluminum and injection molded plastic components with the ease of paper insert flexibility to produce a highly desirable, quick-change, sign system.

No cumbersome components. No visible fasteners. No bulky apparatus to hold a simple piece of paper or other 1/16 inch thick insert material including:

- acrylic
- photopolymer
- engraving stock
- zinc and more!

ADA compatible, *Capture* can be fully integrated with a program of Slatz directories and wayfinding signage for multi-functional communication with staff and visitors alike. Or, it can stand on its own!

Insert capabilities give the end-user more control...and satisfaction...than ever, enabling them to make changes at will.

Change. It's inevitable.

CAPTURE IT!



Paper insert **P**
Engraved **E**

Planning signage for a new facility or retrofit requires foresight. Selecting signs for what you know today is easy. Selecting signs for changes you can't anticipate is the challenge.

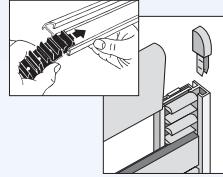
Capture faceplate extrusions give you all the flexibility of the Slatz system with an extra added benefit - the capacity to hold changeable inserts. And, *Capture* is available in wall-mounted, single-face and directory configurations as well as double-sided projected and suspended signs.

Capture lets you change menus. Change offices. Change direction. Change schedules. Change your mind! Simply remove and replace the inserts while your signs stay right where they are.

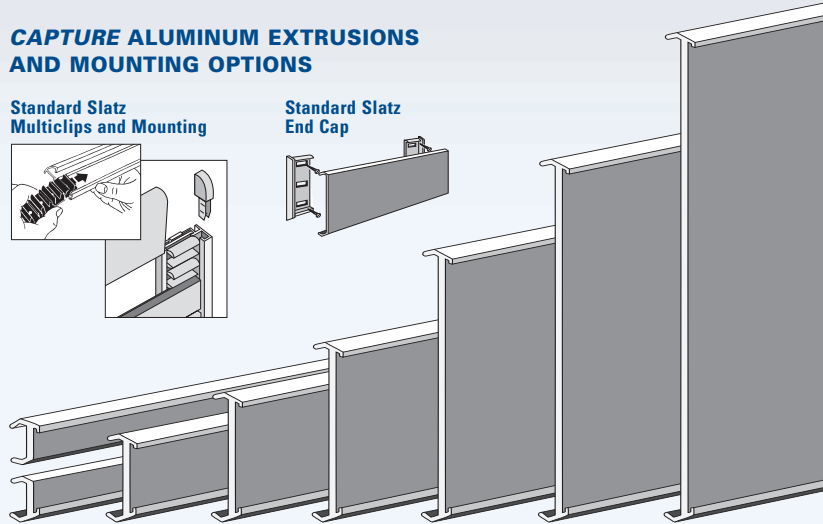
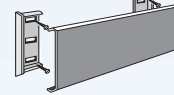
Mistakes are amendable. Moves are facilitated. Change is simplified.

CAPTURE ALUMINUM EXTRUSIONS AND MOUNTING OPTIONS

Standard Slatz Multiclips and Mounting



Standard Slatz End Cap



Mini Holders	Little	Middle	Big	King	Super	Jumbo
	1-5/8"	2-3/8"	3-1/4"	4-7/8"	6-7/16"	8-7/8" overall
	1-3/10"	2-1/8"	2-7/8"	4-7/16"	6-3/32"	8-1/2" insert/lens

MOUNTING

Capture can be mounted vertically or horizontally using matching end-caps that work as a finishing feature. *Capture* directories are mounted on multiclips with sidetrack.

COLOR

Capture is available in silver anodized finish or standard industry colors achieved with our vinyl Colorfix™ System or it can be painted.

ASSEMBLY & INSTALLATION

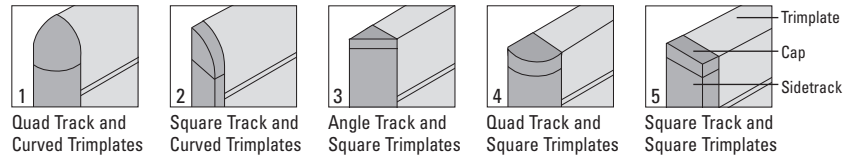
Capture signs and directories are simple to assemble and install. A pencil, level, drill and screwdriver or VHB tape are all you need.

CUSTOM SIZE INSERTS

For inserts exceeding the size of the Jumbo extrusion, use a pair of Slatz Mini-Holders, placed top and bottom. This enables you to create space for a large, flat surface, allowing you to position an expanded graphic or engraving into a Slatz directory or other configuration.

FRAMING OPTIONS

Framing options require two selections: trimplate and sidetrack.



INSERT REMOVAL

To change a paper insert, remove the clear plastic lens with suction cup provided and lift paper out. Change rigid insert by lifting the extrusion off the end cap or multiclip and sliding the insert out.

PAPER INSERTS

Make changes for paper inserts on in-house computers.

SINGLE SIGN

Combine extrusion and two end caps for single sign.

DIRECTORY OPTIONS

Use sidetracks and multiclips to create a directory for paper or engraved inserts.

RIGID INSERTS

Engraved inserts up to 1/16 inch thick include acrylic, zinc and photopolymer. (Cutaway shows multiclips.)



FREQUENTLY ASKED QUESTIONS

Q: Is *Capture* ADA compatible?

A: Yes. Rigid material can feature raised graphics and Grade 2 Braille. Clear acrylic lenses meeting ADA requirements can be used with paper inserts.

Q: What type of paper do you recommend for inserts?

A: We use Hewlett-Packard 32#, 98% white laser paper.

Q: Do you provide templates for paper inserts?

A: Each order is unique. We can assist you with setting up templates.

Q: What is the recommended thickness of rigid inserts?

A: *Capture* accommodates engraving stock up to 1/16 inch thick.

Q: What is the thickness of the clear lens?

A: The polycarbonate clear lens to cover paper inserts is .020th of an inch thick. Clear acrylic used to meet ADA guidelines is 1/16 inch thick.

Q: Are stock lengths of material available?

A: Aluminum extrusions come in 5' and 10' lengths. Polycarbonate lenses are available up to 4' in length. Custom-size lenses are available.

Q: Is *Capture* available in cut-to-size kits?

A: *Capture* is available in cut-to-size, ready-to-assemble and decorate kits, or as finished, ready-to-install signs.



Double-Sided Projecting



Double-Sided Suspended



Directory



Nameplate



1857 Walnut Street, Allentown, PA 18104
800.331.1891 • 610.434.9889 • Fax 610.434.9868

CLARKESYSTEMS.COM