



**CLARKE
SYSTEMSSM**

1500 Design SERIES

Architectural Sign
Systems and Wayfinding



1500

DESIGN SERIES

The Clarke Systems 1500 Design Series features a unique combination of 3D acrylic. This ADA compliant sign series is **the ultimate display of depth and dimensionality** using layered plastic and acrylic materials. The possibilities are endless with the color combinations for this series. The top and bottom acrylic colors can be the same or different — the choice is yours! Select this series for environments that are modern and may feature glass walls or windows.

CUSTOMIZABLE
PAPER INSERT

DIMENSIONAL
CLEAR LENS
ACCENTS THE
PAPER INSERT

Anthony Morgan
Art Director

ADA COMPLIANT
NON-GLARE ACRYLIC

150

BACKER

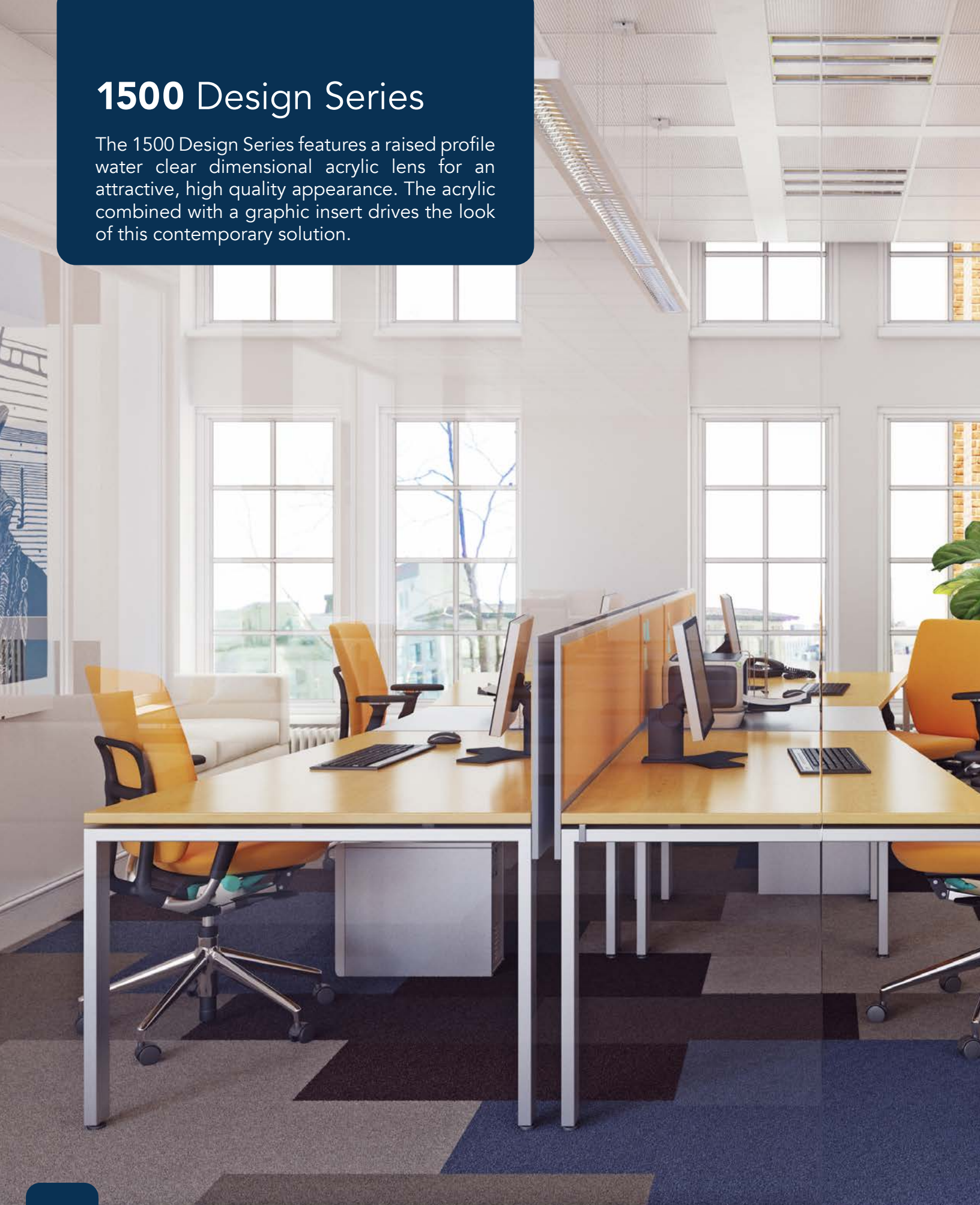
TACTILE RAISED TEXT

GRADE II BRAILLE

SIGN TYPE D OFFICE/ROOM

1500 Design Series

The 1500 Design Series features a raised profile water clear dimensional acrylic lens for an attractive, high quality appearance. The acrylic combined with a graphic insert drives the look of this contemporary solution.





PROJECTING (P)

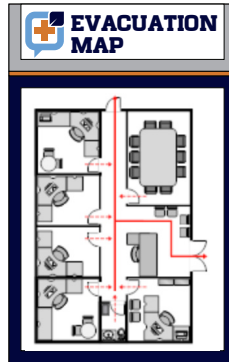


SUSPENDED (S)

COASTAL MARITIME MEDICAL SCHOOL

1	1100	Classroom
	1200	Classroom
	1400	Computer Lab
	1300	Laboratory A
	1500	Laboratory B
2	2100	Classroom
	2200	Classroom
	2300	Classroom
	2400	Laboratory C
	2500	Library
3	3200	Admissions
	3400	Bursar
	3500	Dean
	3300	Financial Aid
	3100	Registrar

DIRECTORY (A)



EVACUATION (C)

COASTAL MARITIME MEDICAL SCHOOL

NE STAIR 1
FLOORS 1-3

FLOOR **3** ←

ROOF ACCESS
EXIT ON FLOOR 1

STAIRWELL (N)

FIRST FLOOR

←

1100 Classroom
1200 Classroom
1300 Laboratory A

→

1400 Computer Lab
1500 Laboratory B

DIRECTIONAL (B)



Clinical Laboratory

1500

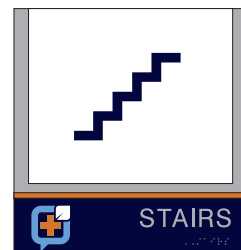
OFFICE/ROOM (D)

Charles Ackerman

WORKSTATION (E)

LABORATORY SUPPLIES

UTILITY (G)



REGULATORY (J)



RESOURCES

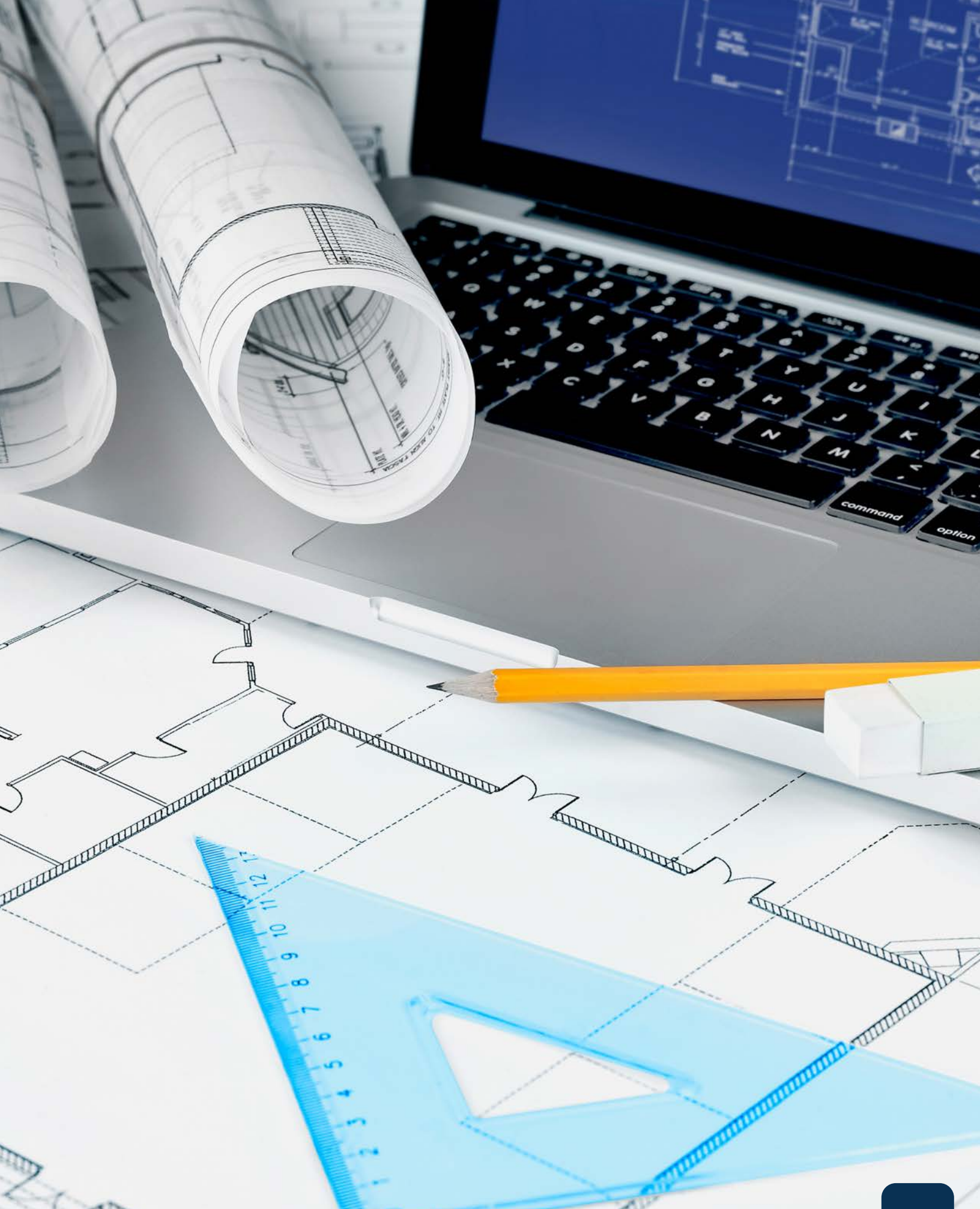
[ADA Compliant Colors](#)

[ADA Compliant Fonts and Arrows](#)

[Common Pictograms](#)

[Mounting By Wall Type](#)

[Sign Series Specifications](#)



ADA COMPLIANT COLORS

MATTE FINISH ACRYLIC

601 Red	602 Burgundy	823 Canyon	603 Orange	701 Yellow	901 Bright Green	902 Pine Green	991 Hunter Green
903 Black Forest Green	509 Bahama Blue	501 Blue	506 Sapphire	571 Light Blue	521 Coastal Blue	302 China Blue	321 Slate
502 Marine Blue	504 Air Force Blue	581 Ultra Violet	801 Antique Ivory	808 Sand	214 Ash	811 Parchment	218 Sandalwood
201 White	204 Bright White	305 Light Grey	306 Pearl Grey	851 Desert Sand	595 Driftwood	331 Grey Flannel	301 Grey
993 Silver Metallic	307 Charcoal Grey	413 Cinder	831 Beige	805 Candlewick	806 Putty	802 Taupe	803 Dark Brown
821 Medium Brown	401 Black	891 Copper	871 Deep Bronze	771 Gold	304 Silver	398 Graphite	
Photoluminescent*	354 Brushed Aluminum**	313 Brushed Stainless**	Natural Maple*	Select Cherry*	Prestige Walnut*		

Colors may vary due to the printing process. 354 Brushed Aluminum has a black core. 313 Brushed Stainless has a silver core.

* Denotes special pricing.

**Denotes special pricing and due to metallic finish, not ADA compliant.

ADA COMPLIANT FONTS AND ARROWS

Arial Regular

ABCDEFGHIJKLMNOPQRSTUVWXYZ

abcdefghijklmnopqrstuvwxyz

1234567890



AvantGarde

ABCDEFGHIJKLMNOPQRSTUVWXYZ

abcdefghijklmnopqrstuvwxyz

1234567890



Avenir Roman

ABCDEFGHIJKLMNOPQRSTUVWXYZ

abcdefghijklmnopqrstuvwxyz

1234567890



Century Gothic Regular

ABCDEFGHIJKLMNOPQRSTUVWXYZ

abcdefghijklmnopqrstuvwxyz

1234567890



Frutiger Roman

ABCDEFGHIJKLMNOPQRSTUVWXYZ

abcdefghijklmnopqrstuvwxyz

1234567890



Futura Medium

ABCDEFGHIJKLMNOPQRSTUVWXYZ

abcdefghijklmnopqrstuvwxyz

1234567890



Gill Sans Regular

ABCDEFGHIJKLMNOPQRSTUVWXYZ

abcdefghijklmnopqrstuvwxyz

1234567890



Helvetica Regular

ABCDEFGHIJKLMNOPQRSTUVWXYZ

abcdefghijklmnopqrstuvwxyz

1234567890



Interstate Regular

ABCDEFGHIJKLMNOPQRSTUVWXYZ

abcdefghijklmnopqrstuvwxyz

1234567890



Myriad Roman

ABCDEFGHIJKLMNOPQRSTUVWXYZ

abcdefghijklmnopqrstuvwxyz

1234567890



Swiss 721 BT Roman

ABCDEFGHIJKLMNOPQRSTUVWXYZ

abcdefghijklmnopqrstuvwxyz

1234567890



Trebuchet Regular

ABCDEFGHIJKLMNOPQRSTUVWXYZ

abcdefghijklmnopqrstuvwxyz

1234567890



Universe Roman 55

ABCDEFGHIJKLMNOPQRSTUVWXYZ

abcdefghijklmnopqrstuvwxyz

1234567890



Verdana Regular

ABCDEFGHIJKLMNOPQRSTUVWXYZ

abcdefghijklmnopqrstuvwxyz

1234567890

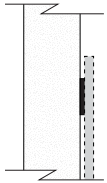


COMMON PICTOGRAMS

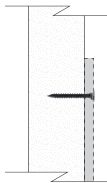
						
P1 Telephone	P2 Mail	P3 Currency Exchange	P4 Cashier	P5 First Aid	P6 Lost & Found	P7 Coat Check
						
P8 Exit	P9 Escalator	P10 Escalator Down	P11 Escalator Up	P12 Stairs	P13 Stairs Down	P14 Stairs Up
						
P15 Elevator	P16 Mens Room	P17 Womens Room	P18 Restroom	P19 Gender Neutral	P20 Water Fountain	P21 Waiting Room
						
P22 Information	P23 Hotel Information	P24 Air Transportation	P25 Heliport	P26 Taxi	P27 Bus	P28 Ground Transportation
						
P29 Rail Transportation	P30 Water Transportation	P31 Car Rental	P32 Restaurant	P33 Coffee Shop	P34 Bar	P35 Shops

MOUNTING BY WALL TYPE

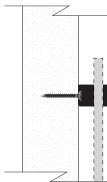
DRYWALL SURFACE OPTIONS



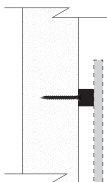
ADHESIVE (Double Face Tape and Silicone) For use on hard wall surfaces with a smooth finish, such as drywall. Adhesive may not be applicable for some vinyl wall coverings.



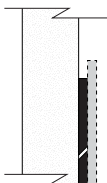
SCREW For use on rough surfaces such as brick and block. Also recommended on all wall-mount signs, including on drywall.



STAND OFF For use on smooth, hard surfaces. Not recommended for some vinyl wall coverings.

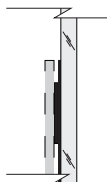


STUD For use on smooth, hard surfaces. Not recommended for some vinyl wall coverings.



CLEAT For use on smooth, hard surfaces. Not recommended for some vinyl wall coverings.

GLASS SURFACE OPTIONS



GLASS BACKER For use on glass surfaces where the opposite side is visible. A vinyl piece replicates the sign shape and size and hides the double face tape adhesive from the viewer.

FABRIC SURFACE OPTIONS



PIN MOUNT For use on fabric surfaces, including fabric mounted on hard material and acoustical panels.

CUBICLE STRUCTURE OPTIONS



HOOK For use on cubicle and wall furniture panels. Clear material hooks over the top of the panel.



SADDLE For use on cubicle and wall furniture panels including clear and frosted panels. Aluminum hooks over the top of the panel and the sign is flush with the top.



DOUBLE SADDLE For use on cubicle and wall furniture panels including clear and frosted panels. Aluminum hooks over the top of the panel and the signs are flush with the top.



PANEL/TILE For use on furniture panels and tiles. The aluminum hooks over the top of the panel or tile and is concealed by the top cap. The sign is flush with the top of the panel.



MAGNETIC For use on steel or magnetized surfaces.



PANEL TOP For use on the top surface of a cubicle or furniture panel. The bracket is extruded aluminum and is affixed to the top of the panel with pressure sensitive double faced tape.

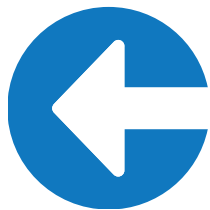
SIGN SERIES SPECIFICATIONS

Please note all dimensions listed are nominal. Refer to shop drawings for all exact dimensions.

SIGN TYPE	OVERALL DIMENSION (width x height)	DEPTH	HEADER HEIGHT	FOOTER HEIGHT	ACCENT STRIPE	INSERT SIZE	PRINTER	BRILLE	MOUNTING HEIGHT
1500 SERIES (\$\$\$)									
A DIRECTORY	22.00" x 40.00"	0.75"	7.00"	N/A	0.187"	20.00" x 31.00"	Oversize	No	60.00" COS
B DIRECTIONAL	12.50" x 22.50"	0.50"	4.00"	N/A	0.187"	11.00" x 17.00"	Standard	No	60.00" COS
D OFFICE/ ROOM	6.00" x 5.50"	0.50"	3.50"	2.00"	0.187"	5.00" x 3.00"	Standard	Yes	60.00" TOS
E WORK-STATION	6.00" x 2.50"	0.50"	N/A	N/A	0.187"	N/A	Standard	No	60.00" TOS
G UTILITY	8.00" x 8.50"	0.50"	6.50"	2.00"	0.187"	7.00" x 6.00"	N/A	Yes	60.00" TOS
J REGULATORY	8.00" x 8.50"	0.50"	6.50"	2.00"	0.187"	7.00" x 6.00"	N/A	Yes	60.00" TOS
N STAIRWELL	16.00" x 25.00"	0.50"	4.00"	N/A	0.187"	N/A	N/A	Yes	60.00" TOS
G EVAC MAP	9.50" x 15.00"	0.50"	3.00"	N/A	0.187"	8.50" x 11.00"	Standard	No	60.00" TOS
S SUSPENDED	42.00" x 8.00"	0.50"	N/A	N/A	N/A	40.50" x 6.50"	N/A	No	84.00" BOS
P PROJECTING	8.625" x 8.50"	0.50"	6.50"	2.00"	0.187"	7.00" x 6.00"	N/A	No	84.00" BOS

COS = Center of Sign
TOS = Top of Sign
BOS = Bottom of Sign

\$ GOOD
\$\$ BETTER
\$\$\$ BEST



**CLARKE
SYSTEMS™**

1857 Walnut Street, Allentown, PA 18104

800-331-1891

WWW.CLARKEYSTEMS.COM

Disclaimer: Clarke Systems reserves the right to make changes to any of the products, sizes, colors, or materials featured in this brochure without prior notification.