



**CLARKE  
SYSTEMS**<sup>SM</sup>

# SLATZ

Modular Sign System  
& Wayfinding Solution



# SLATZ® Modular Sign System

## A TOTAL SIGN PROGRAM IN ONE SYSTEM

Whether they coordinate with a comprehensive wayfinding system that begins outside a building, or they are the first signs that greet people for an individual department or business inside a complex, the **Slatz® Sign System provides versatile and adaptable solutions for interior communications.**

Using the same basic building blocks of universal clips and end caps, along with faceplates in a variety of sizes and finishes, you can **create a coordinated sign program** that works on its own or can be interfaced with other Clarke Systems products.

Identify destination areas and departments on a centralized, wall-mounted directory available in single and multi-column configurations. Reinforce the directions with wall-mounted and/or ceiling-hung directionals. Specify departments, personnel, restrooms and other special-use rooms with door-side identification signs and/or projected room numbers.



### SINGLE PANEL

Extrusions can be cut to any length — long or short — for single panel signs.



### MULTIPLE PANELS & COLUMNS

Flexible components assure unlimited configurations.



### CUSTOM PANELS

Custom size panels integrate with the system and enhance design capabilities.



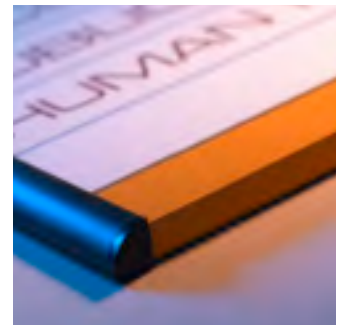
### SUSPENDED OR PROJECTING

Overhead options maximize visibility in difficult areas.



### SIDETRACK SYSTEM

Sidetrack extrusions ensure panel alignment and conceal edges.

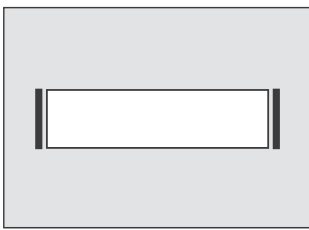


# SLATZ® Modular Sign System

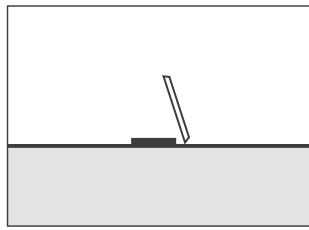
## SIGN CONFIGURATIONS

### SINGLE PANEL Configurations

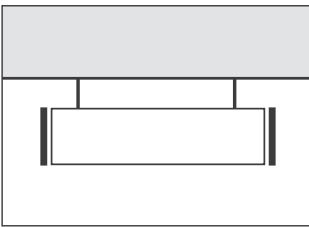
The Slatz end cap does dual duty as a mounting bracket and finishing feature. Available in sizes to fit each Slatz faceplate extrusion, the caps are used to mount single-panel signs. They are ideal for nameplates, desk signs, restrooms and single-message communication.



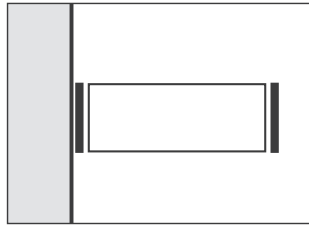
WALL SIGN



DESK SIGN



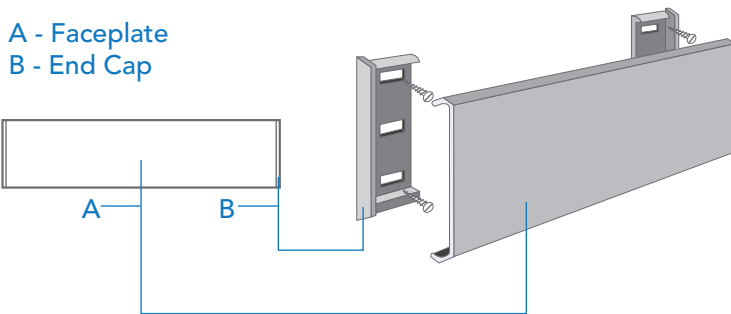
SUSPENDED SIGN



PROJECTING SIGN

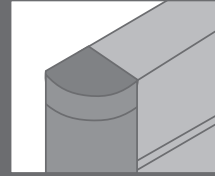
### Single Panel Construction

A - Faceplate  
B - End Cap

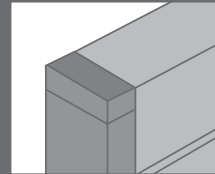


## Framing Options

Framing options require two selections: trimplate and sidetrack.



Quad Track and Square Trimplate



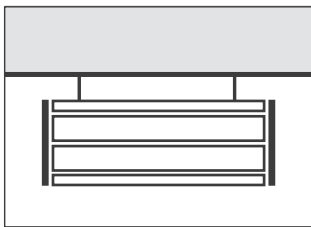
Square Track and Square Trimplate

# SLATZ® Modular Sign System

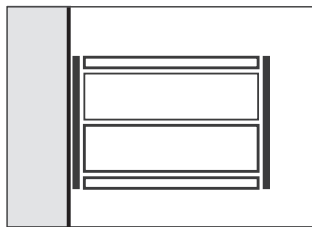
## SIGN CONFIGURATIONS

### MULTI PANEL Configurations

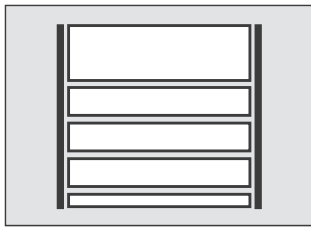
At the heart of a multi-panel Slatz sign is the multiclip. Inserted into aluminum sidetracks, multiclips hold multiple faceplates in limitless combinations to form everything from basic wall directional signs to complex directories and displays. The possibilities are endless.



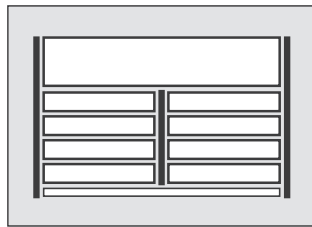
SUSPENDED  
DIRECTORY



PROJECTING  
DIRECTORY



SINGLE-COLUMN  
DIRECTORY

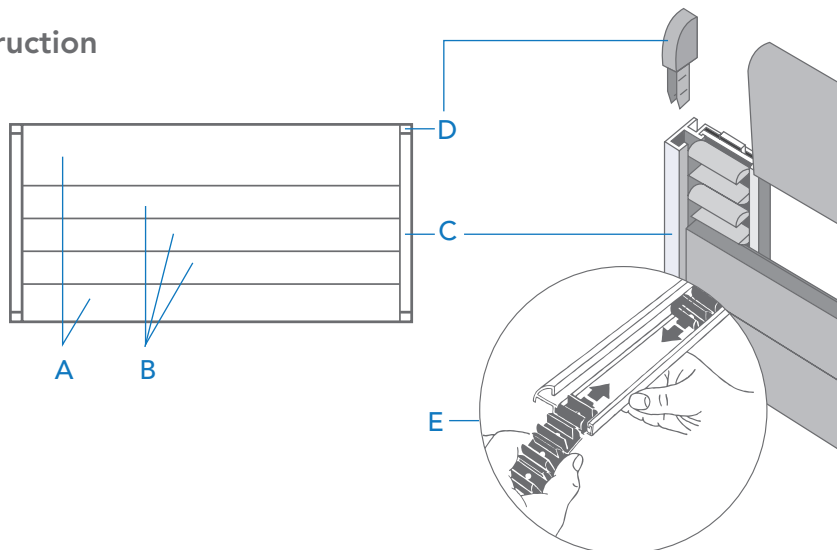


MULTI-COLUMN  
DIRECTORY



### Multi Panel Construction

- A - Trimplate
- B - Faceplate
- C - Sidetrack
- D - Sidetrack Cap
- E - Multiclip

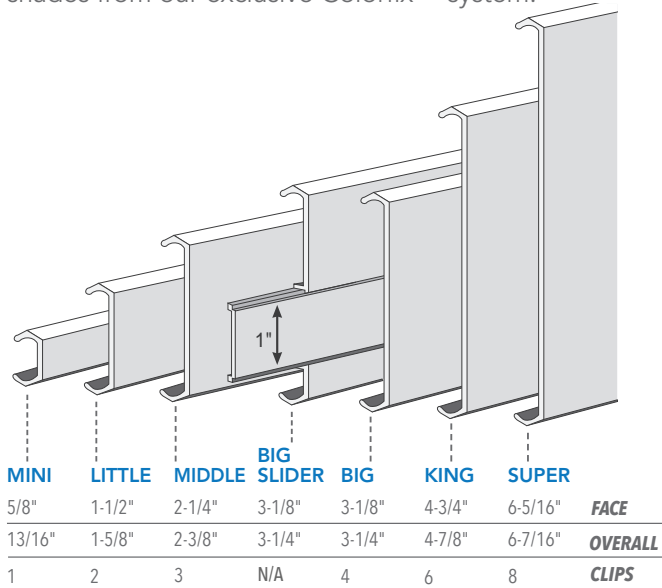


# SLATZ® Modular and Capture Sign System

## SIGN COMPONENTS

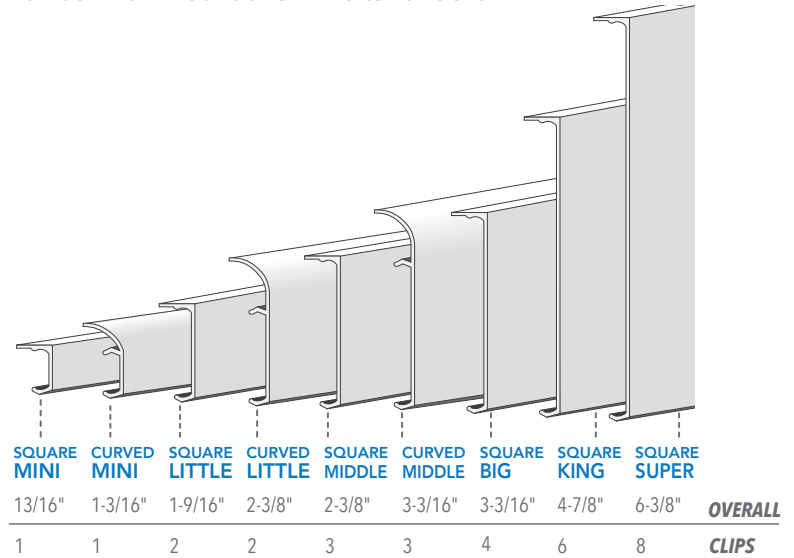
### Faceplates

Faceplates are precision-engineered aluminum extrusions. Available in a silver satin finish or many shades from our exclusive Colorfix™ system.



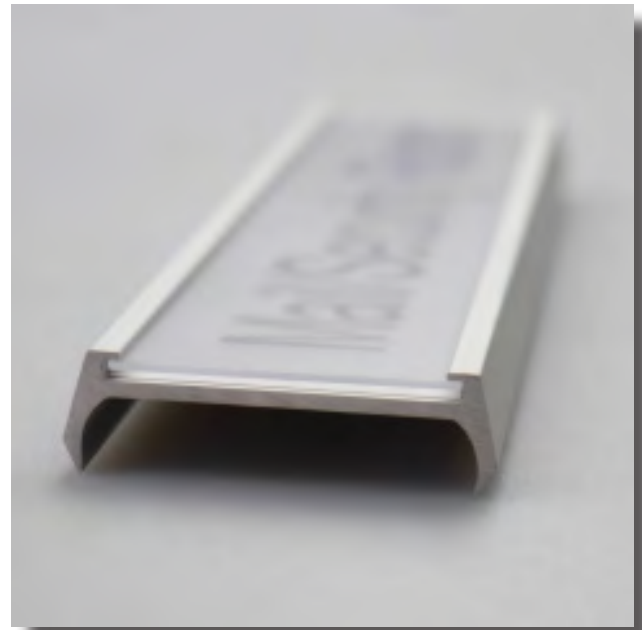
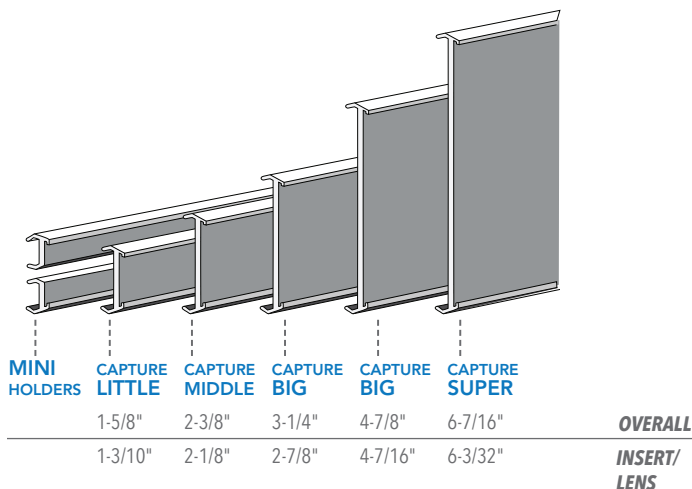
### Trimplates

Trimplates are similar in construction to faceplates except for a return on one edge. The return provides a flush wall mount and inhibits vandalism.



### Capture

Capture® faceplate extrusions give you all the flexibility of the Slatz® system with an extra added benefit — the capacity to hold changeable inserts.

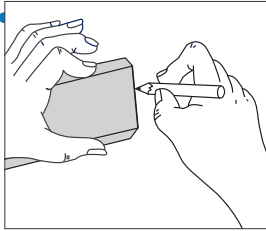




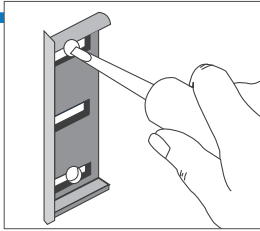
# STANDARD SLATZ®

## INSTALLATION INSTRUCTIONS

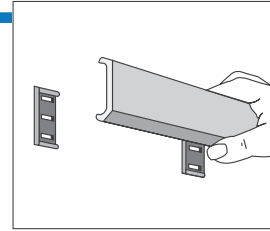
### WALL/DOOR SIGNS



Hold plate on wall at desired location. Mark sides and corners.

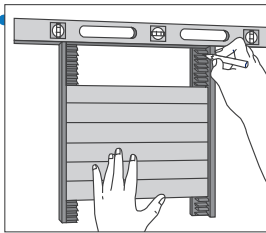


Remove end caps. Hold caps to corner markings and mark end cap mounting holes. Drill holes, insert anchors, and fasten caps to wall. Do not fasten tightly; allow for minor adjustment.

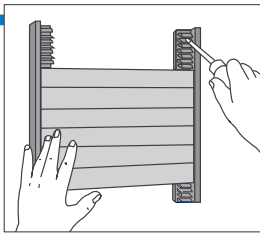


Snap faceplate into place.

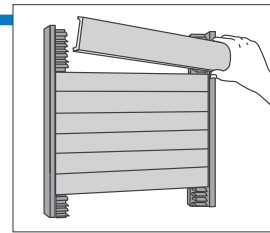
### SINGLE-COLUMN DIRECTORIES



Remove plates, where shown, to expose mounting holes. For taller directories, check the tracks for additional holes. Position on mounting surface, level, and mark holes.

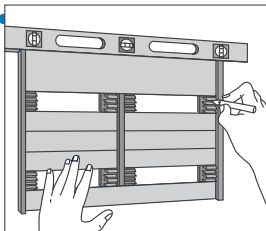


Drill holes in wall where indicated and insert anchors. Line directory up to holes and fasten with screws.

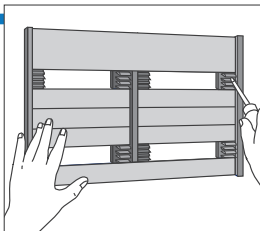


Replace plates.

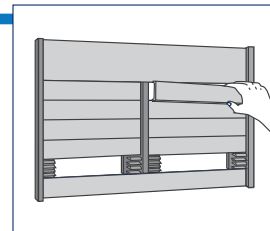
### MULTI-COLUMN DIRECTORIES



Remove plates, where shown, to expose mounting holes. Position on mounting surface, level, and mark holes.

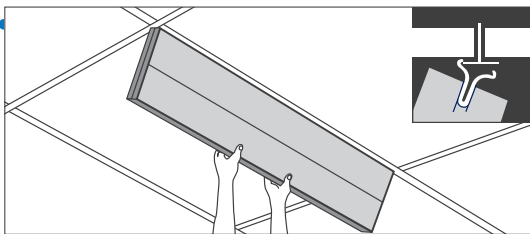


Drill holes in wall and insert anchors. Line directory up to holes and fasten with screws.

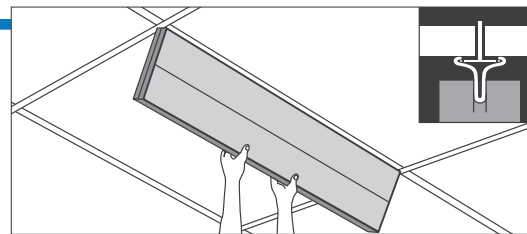


Snap faceplate into place.

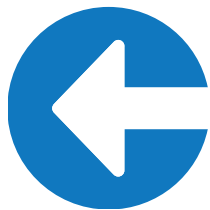
### FLUSH-MOUNT CEILING DIRECTORIES



Hook one side of the ceiling clips to metal ceiling strip as shown in insert.



Finish by hooking the second side of clips as shown in insert.



**CLARKE  
SYSTEMS™**

1857 Walnut Street, Allentown, PA 18104

**800-331-1891**

**SALES@CLARKEYSTEMS.COM  
WWW.CLARKEYSTEMS.COM**